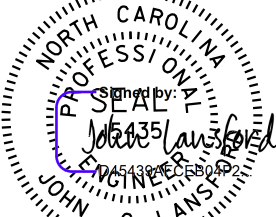

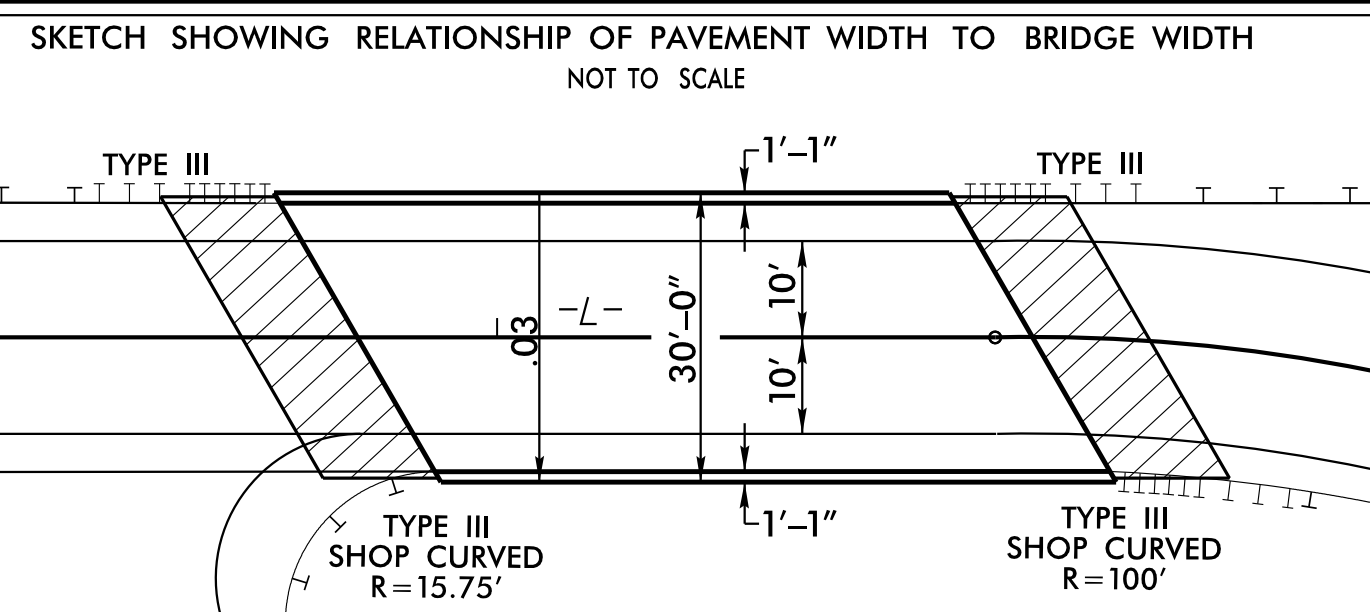




Johnson, Mirmiran, & Thompson Inc.
4700 Falls of Neuse Rd, Suite 100,
Raleigh, NC, 27609
License No: C-3097

PROJECT REFERENCE NO.		SHEET NO.
B-6034		4
RW SHEET NO.		
ROADWAY DESIGN ENGINEER	HYDRAULICS ENGINEER	
		
11/25/2025		
12/1/2025		
DOCUMENT NOT CONSIDERED FINAL UNLESS ALL SIGNATURES COMPLETED		

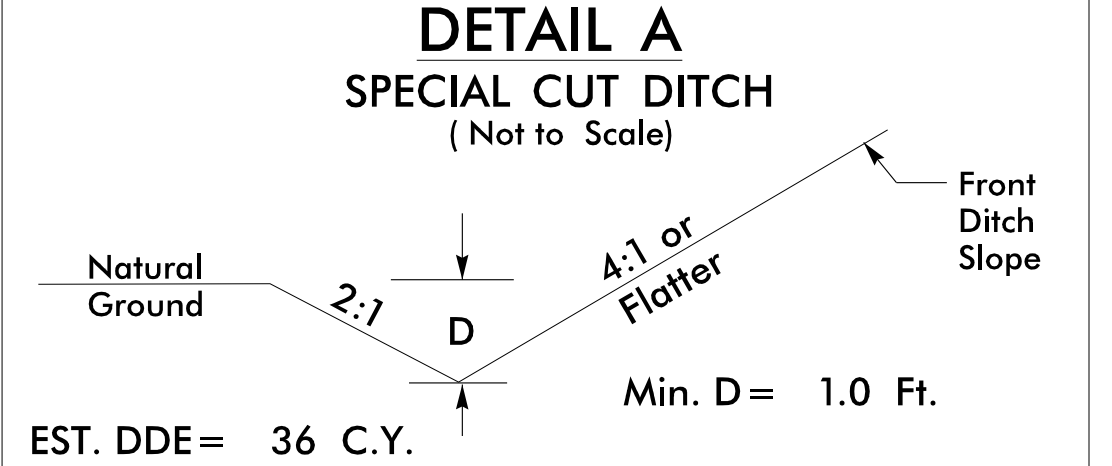
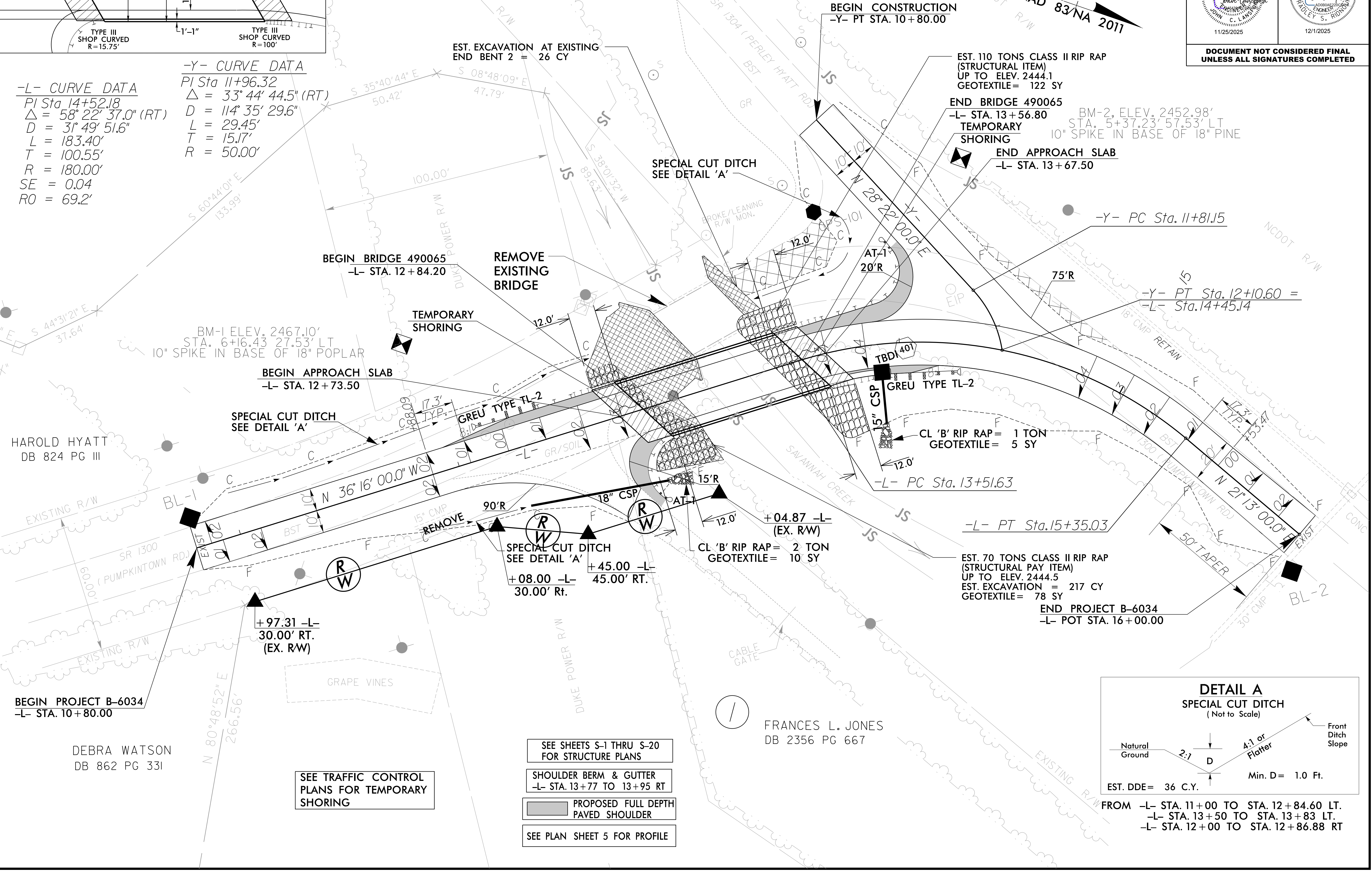


-L- CURVE DATA

PI Sta 14+52.18
 $\Delta = 58^{\circ} 22' 37.0''$ (RT)
 $D = 31^{\circ} 49' 51.6''$
 $L = 183.40'$
 $T = 100.55'$
 $R = 180.00'$
 $SE = 0.04$
 $RO = 69.2'$

-Y- CURVE DATA

PI Sta 11+96.32
 $\Delta = 33^{\circ} 44' 44.5''$ (RT)
 $D = 114^{\circ} 35' 29.6''$
 $L = 29.45'$
 $T = 15.17'$
 $R = 50.00'$



FROM -L- STA. 11+00 TO STA. 12+84.60 LT.
-L- STA. 13+50 TO STA. 13+83 LT.
-L- STA. 12+00 TO STA. 12+86.88 RT

- SEE SHEETS S-1 THRU S-20
FOR STRUCTURE PLANS
- SHOULDER BERM & GUTTER
-L- STA. 13+77 TO 13+95 RT
- PROPOSED FULL DEPTH
PAVED SHOULDER
- SEE PLAN SHEET 5 FOR PROFILE

SEE TRAFFIC CONTROL
PLANS FOR TEMPORARY
SHORING

DEBRA WATSON
DB 862 PG 331

BEGIN PROJECT B-6034
-L- STA. 10+80.00

+97.31 -L-
30.00' RT.
(EX. RW)

SPECIAL CUT DITCH
SEE DETAIL 'A'
+45.00 -L-
+08.00 -L- 45.00' RT.
30.00' Rt.

+04.87 -L-
(EX. RW)
CL 'B' RIP RAP = 2 TON
GEOTEXTILE = 10 SY

EST. 70 TONS CLASS II RIP RAP
(STRUCTURAL PAY ITEM)
UP TO ELEV. 2444.5
EST. EXCAVATION = 217 CY
GEOTEXTILE = 78 SY

END PROJECT B-6034
-L- POT STA. 16+00.00

-L- PT Sta. 15+35.03

-L- PC Sta. 13+51.63

-Y- PT Sta. 12+10.60 =
-L- Sta. 14+45.14

-Y- PC Sta. 11+81.15

END APPROACH SLAB
-L- STA. 13+67.50

END BRIDGE 490065
-L- STA. 13+56.80
TEMPORARY
SHORING

EST. 110 TONS CLASS II RIP RAP
(STRUCTURAL ITEM)
UP TO ELEV. 2444.1
GEOTEXTILE = 122 SY

BEGIN CONSTRUCTION
-Y- PT STA. 10+80.00

EST. EXCAVATION AT EXISTING
END BENT 2 = 26 CY

BEGIN BRIDGE 490065
-L- STA. 12+84.20

BEGIN APPROACH SLAB
-L- STA. 12+73.50

HAROLD HYATT
DB 824 PG III

FRANCES L. JONES
DB 2356 PG 667

REVISIONS

11/17/2025 11:40:30 AM
J:\Projects\Jackson6\J-dj-ps-h.dgn
User: jackson6